

# CERTIFICATE OF LOCATION OF GOVERNMENT CORNER

NORTHEAST Corner of Section 17, Township 108, Range 42, 5TH P.M.

STATE OF MINNESOTA, County of MURRAY

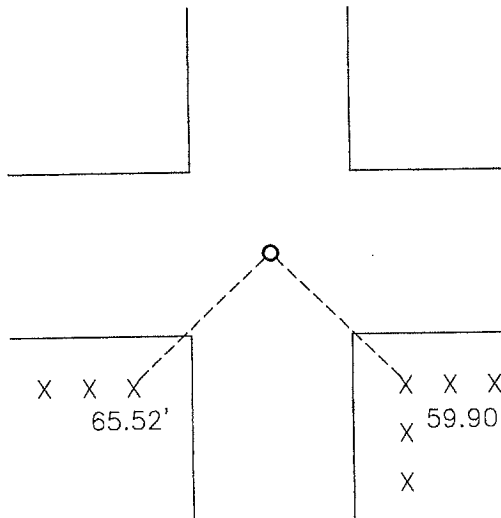
At the corner location shown on the sketch:

On 12-06-2012 found a PK nail.  
DATE

left monument as found,  lowered monument,  removed monument (explain)

On \_\_\_\_\_ placed a \_\_\_\_\_  
DATE

### SKETCH OF REFERENCE TIES



Minnesota State Plane Coordinate  
 System Murray County Datum  
 NAD83 (1996)  
 N: 216463.868  
 E: 464067.945

Statement of evidence relative to this corner location is on back of page.

I hereby certify that this document and the data contained herein was prepared by me or under my direct supervision.

*David Burk* 2/22/13  
SIGNATURE DATE

Registration No. 43844

- Land Surveyor,  Professional Engineer
- County Surveyor,  County Engineer

OFFICE OF THE COUNTY RECORDER  
County of \_\_\_\_\_

I hereby certify that this document was filed in the Co. Recorders office at \_\_\_\_\_ .M on the \_\_\_\_\_ day of MAY 23 2013 A.D. 20 \_\_\_\_\_

County Recorder *James V. Johnson*  
 By \_\_\_\_\_, Deputy

DOCUMENT NO. \_\_\_\_\_

## Statement of Evidence

In 1861, L. G. W. Fletcher did the original subdivision of the township.

(No date) The Murray County Highway Department set a railroad spike at the corner.

On December 6, 2012, Bueltel-Moseng Land Surveying found a PK nail at the corner.